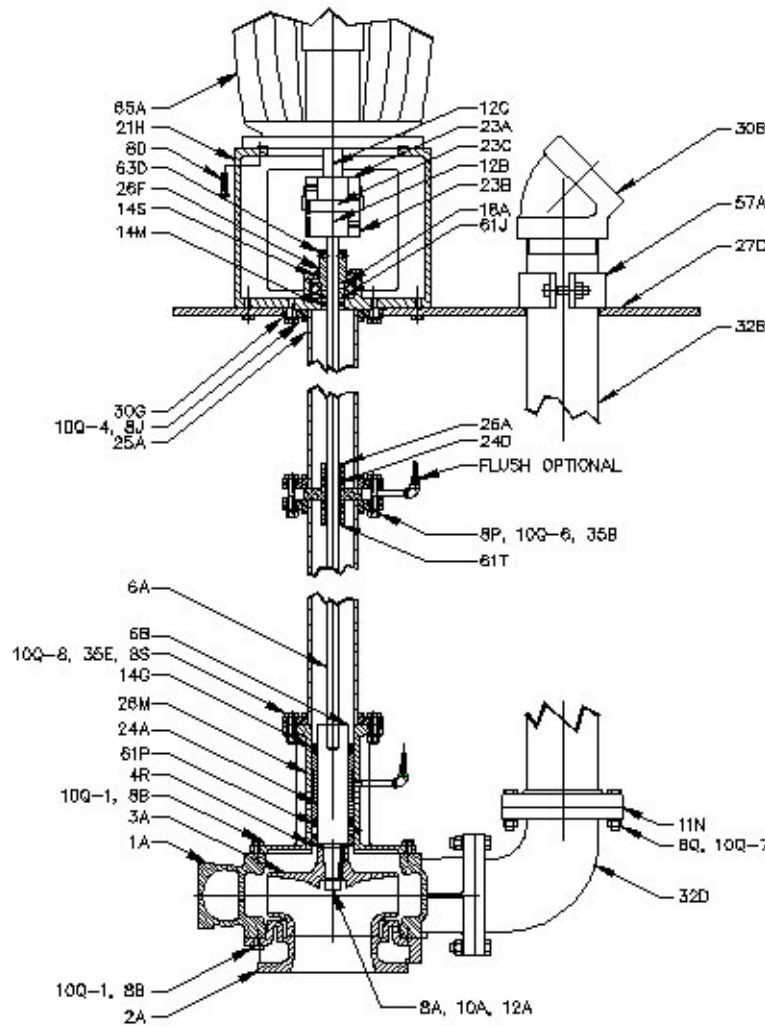


NCC Cross Section



PARTS LIST

- 1A - VOLUTE
- 2A - SUCTION COVER
- 3A - IMPELLER
- 4R - THROTTLE BUSHING
- 6A - SHAFT
- 6B - STUB SHAFT
- 8B - CAP SCREW, VOLUTE
- 8D - CAP SCREW, MOTOR
- 8J - CAP SCREW, UPPER CLMN FLG
- 8P - CAP SCREW, INTER. CLMN FLG
- 8Q - CAPSCREW, DISCHARGE FLG
- 8S - CAP SCREW, LOWER CLMN FLG
- 10A - WASHER, IMPELLER
- 10Q-1 - LOCKWASHER, VOLUTE
- 10Q-4 - LOCKWASHER, UPR CLMN FLG
- 10Q-6 - LOCKWASHER, INTER. CLMN FLG
- 10Q-7 - LOCKWASHER, DISCHARGE FLG
- 10Q-8 - LOCKWASHER, LWR CLMN FLG
- 11N - GASKET, ELBOW
- 12A - KEY, IMPELLER
- 12B - KEY, SHAFT CPLG
- 12C - KEY, MOTOR CPLG
- 14G - LIP SEAL, LWR BRG HOLDER
- 14M - LIP SEAL, LOWER, BEARING
- 14S - LIP SEAL, UPPER, BEARING
- 18A - BALL BEARING
- 21H - MOTOR BRACKET
- 23A - COUPLING HALF, MOTOR
- 23B - COUPLING HALF, PUMP
- 23C - COUPLING INSERT
- 24A - LOWER BEARING
- 24D - INTERMEDIATE BEARING
- 25A - COLUMN
- 26A - INTER. BEARING HOLDER
- 26F - BEARING ADAPTER
- 26M - LOWER BEARING HOLDER
- 27C - SUBPLATE
- 30G - FLANGE, UPPER COLUMN
- 32B - DISCHARGE PIPE
- 32D - ELBOW, 90 DEGREE DISCH
- 32F - ELBOW, 45 DEGREE DISCH
- 34B - NAMEPLATE (NOT PICTURED)
- 35B - NUT, INTERMEDIATE CLMN FLG
- 35E - NUT, COLUMN FLG, LOWER
- 35F - NUT, IMPELLER
- 35N - NUT, DISCHARGE FLG
- 57A - CLAMP, DISCHARGE PIPE
- 61J - RETAINING RING, BEARING
- 61P - RETAINING RING, LWR BRG
- 61T - RETAINING RING, INTER BRG
- 63D - SET SCREW, BRG ADAPTER
- 65A - MOTOR